



Spring/Alameda Safety and Mobility Project

ladot.active@lacity.org
Bicycle Advisory Committee - March 17, 2026

Spring/Alameda

Safety and Mobility Project

Project Limits

Spring St - Wilhardt to College

Alameda St - College to Los Angeles





Engagement Recap



Spring/Alameda

Safety and Mobility Project

Tabling & Pop Up Events



- July 16, 2025 - Chinatown Metro Station
- July 24, 2025 - LA River Farmer's Market
- July 28, 2025 - Tenants Rights Workshop hosted by CD1
- August 3, 2025 - FoLAR RiverFest at the LA State Historic Park
- August 6, 2025 - Olvera St Merchants Association
- August 9, 2025 - Olvera St, Plaza Olvera
- August 13, 2025 - Union Station
- August 16, 2025 - Chinatown Community Land Trust Town Hall
- August 20, 2025 - Safe Routes for Seniors Chinatown Pop-up
- August 25, 2025 - Historic Cultural North Neighborhood Council
- August 28, 2025 - El Pueblo Commissioners Meeting
- August 30, 2025 - William Mead Ice Cream Pop-up
- November 18, 2025 - Open House



Spring/Alameda

Safety and Mobility Project

CBO Partnerships + Stakeholder Engagement



- Collaborated with trusted, local groups to enhance outreach
 - Chinatown Community Land Trust
 - New Economics for Women
- Connected with a large number of stakeholders either in formal meetings/presentations, or during outreach events



Spring/Alameda

Safety and Mobility Project

SURVEY RESPONSE SNAPSHOT

2000

+ 1/3
Community Members
Engaged
of respondents
live on or near
the street

How people travel along Spring and Alameda



1. Walk



2. Transit



3. Drive



4. Bike

Top 3 Roadway Safety Concerns

1 Speeding traffic

2 Difficult crossing
conditions

3 No dedicated
space for cycling



Spring/Alameda

Safety and Mobility Project

Improvements at a Glance

- 1.2 Miles Protected Bike Lanes
- 25+ Reconstructed Curb Ramps
- .8 Miles Slurry Seal
- .4 Miles Street Resurfacing
- Protected Left Turns at Alpine/Alameda
- Signalized Crossings at Ann & Mesnager
- High Visibility Crosswalks at All Signalized Intersections
- Leading Pedestrian Intervals



Spring/Alameda

Safety and Mobility Project

Benefits

- **Signalized crossing** to halt vehicle traffic and **reduce excessive speeds**, therefore limiting risk of severe injury or death for people walking and biking
- **Reduce the number of travel lanes** pedestrians need to cross, therefore reducing exposure to traffic
- **Dedicated, protected space** for cyclists
- New ADA **Curb Ramps**

Ann & Spring (facing East)



Spring/Alameda

Safety and Mobility Project

Benefits

- Provide a **safe, dedicated space for people on bikes and scooters**
- Refreshed crosswalk markings to **highlight pedestrian space**
- **Reduce the number of travel lanes** pedestrians need to cross, therefore reducing exposure to traffic
- Support **First/Last Mile connections** to Chinatown Metro Station

College & Spring (facing East)

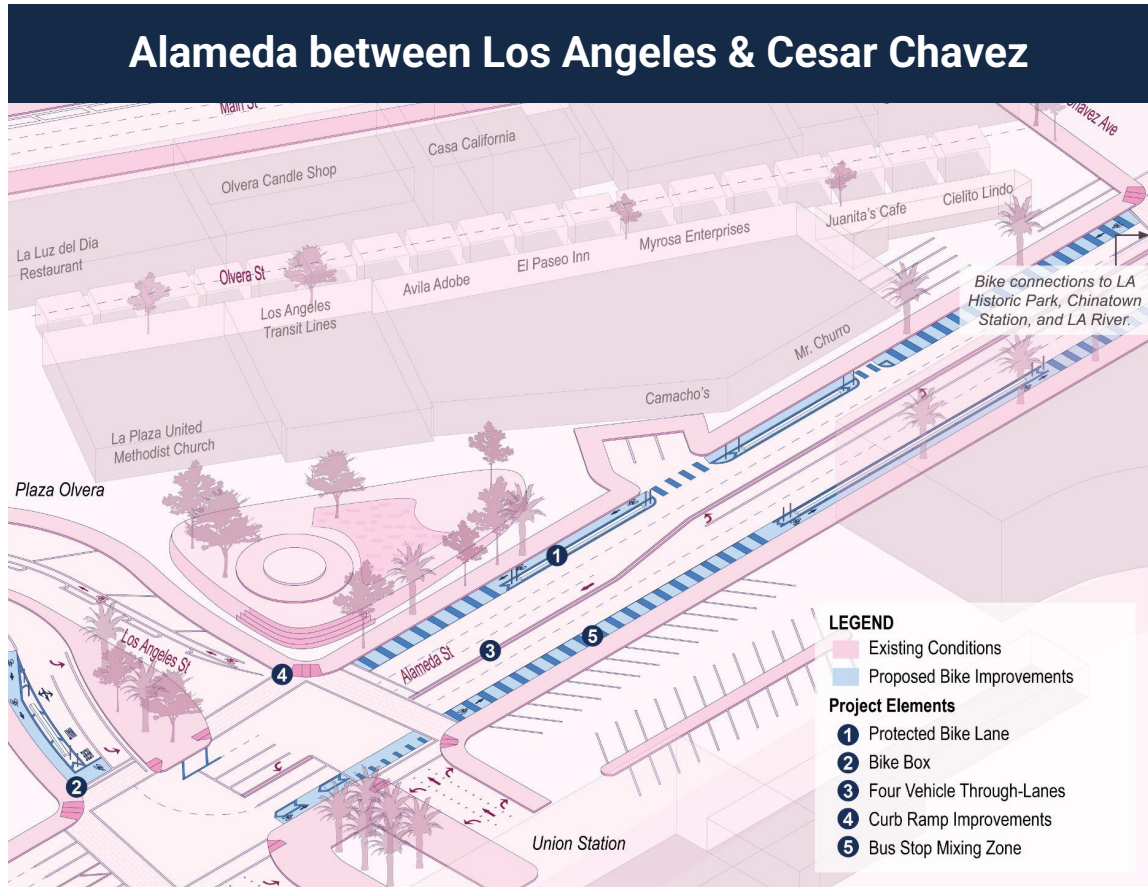


Spring/Alameda

Safety and Mobility Project

Benefits

- **Reduce the number of travel lanes** pedestrians need to cross, therefore reducing exposure to traffic
- **Street resurfacing** on Alameda between Los Angeles St and Main St
- Provide a **safe, dedicated space for people on bikes and scooters**
- **Reduce excessive speeds**, and therefore, risk of severe injury or death for people walking and biking
- **ADA Curb Ramps** at Union Station / Los Angeles St



Spring/Alameda

Safety and Mobility Project

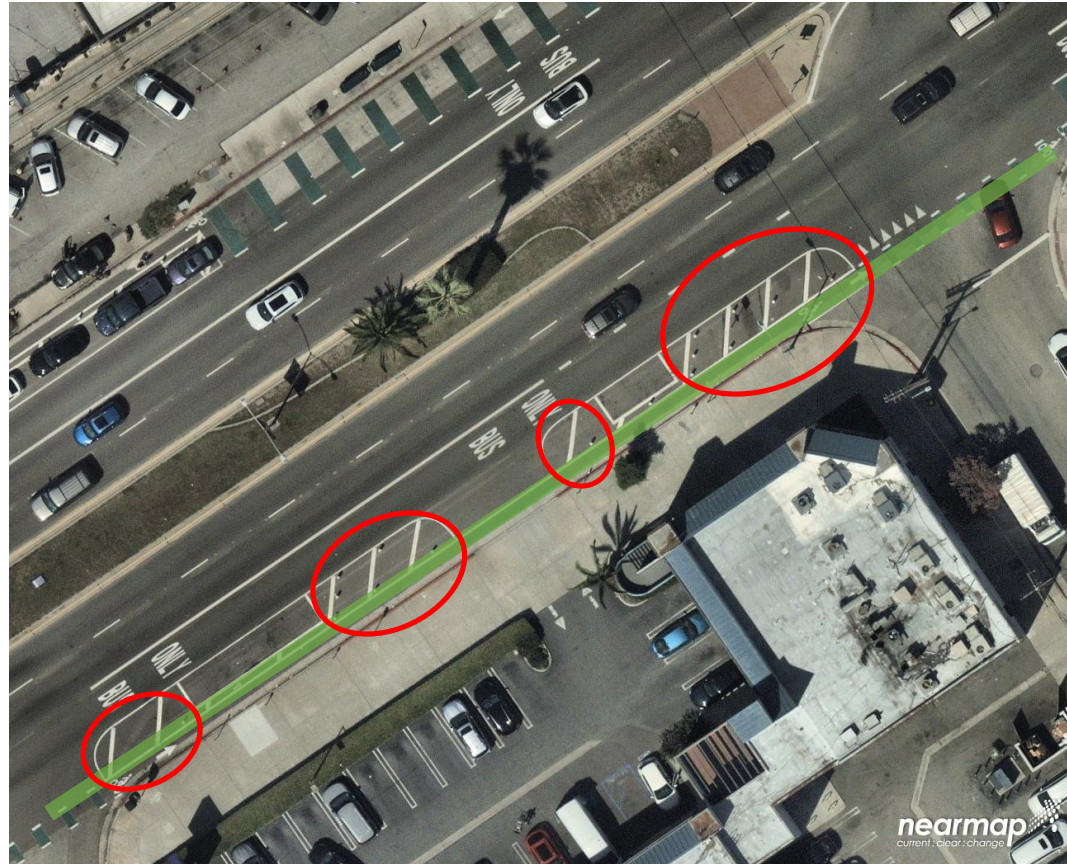
New Street Design Trade-offs: Parking Changes

Existing Parking Spaces: 209

Net Change: 30 to 40 Spaces Removed

80-85% of all parking is retained

- In order to accommodate the need for visibility at driveways and intersections, approximately 1-2 spaces are removed at some locations throughout the corridor (see image for example)



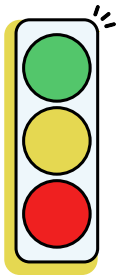
Example: Parking-protected bike lane with no parking immediately before and after driveways and intersections

Spring/Alameda

Safety and Mobility Project

Changes to Travel Time for Cars

Spring/Alameda Change in Travel Time Per Mile (total corridor - 1.2 miles)		
	Northbound	Southbound
AM Peak	50 seconds	1 minute
PM Peak	30 seconds	50 seconds



Less than 2 minutes/mile: Proceed

2-5 minutes/mile: Proceed with caution

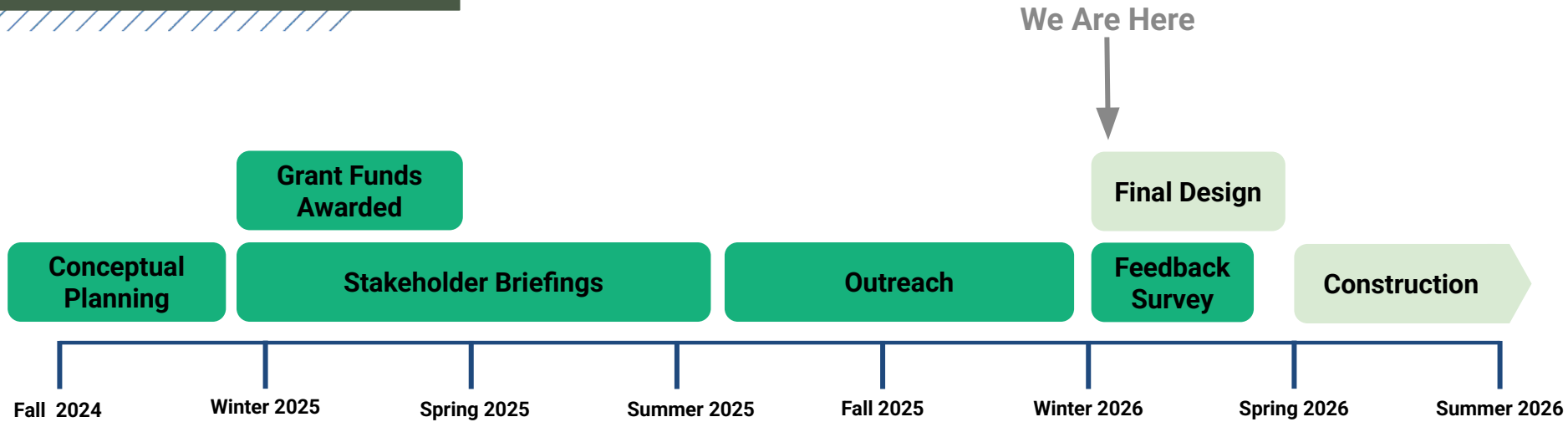
Greater than 5 minutes/mile: Proceed only with compelling needs



Next Steps

Spring/Alameda

Safety and Mobility Project



- **Fall 2025:** Open House + Stakeholder Meetings
- **Fall 2025 / Winter 2026:** Finalize Design + Prepare for Construction
- **Spring/Summer/Fall 2026:** Curb Ramp Construction
- **Winter 2027:** Resurfacing/Slurry + Signing & Striping

Provide Your Feedback on the Proposed Improvements



QR Code for Feedback Form

<https://ladot.typeform.com/springfeedback>

<https://ladotlivablestreets.org/projects/springalameda>



Thank you!

ladot.active@lacity.org