



# Festival Trail Coalition

## Project Implementation Strategy

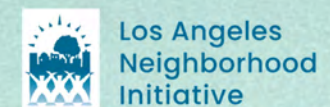
during the LA 2028 Paralympic and Olympic Games



SOMOS



SAFER  
SOMOS ACCELERATOR FOR ECONOMIC RESILIENCE





# A Games for All to create a more resilient Los Angeles.

We can create a legacy of **mobility**, **housing**, economic prosperity, **accessibility**, habitat and **cultural vibrancy** for all.





Over 18 months, we hosted conversations with over 200 stakeholders to craft a robust legacy strategy creating immediate and long-term legacy benefits for the City and region.

# A Coalition for the next LA

## Government

## Community

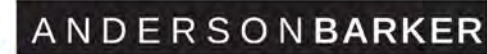
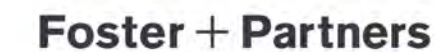
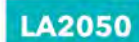
## Mobility

## Design

+

## Engineering

## Industry



CONFIDENTIAL



The Festival Trail links, activates and completes **28 miles of resilient infrastructure** projects that are already funded or in-progress.



Potential site for the Hyde Park hub on the Festival Trail.



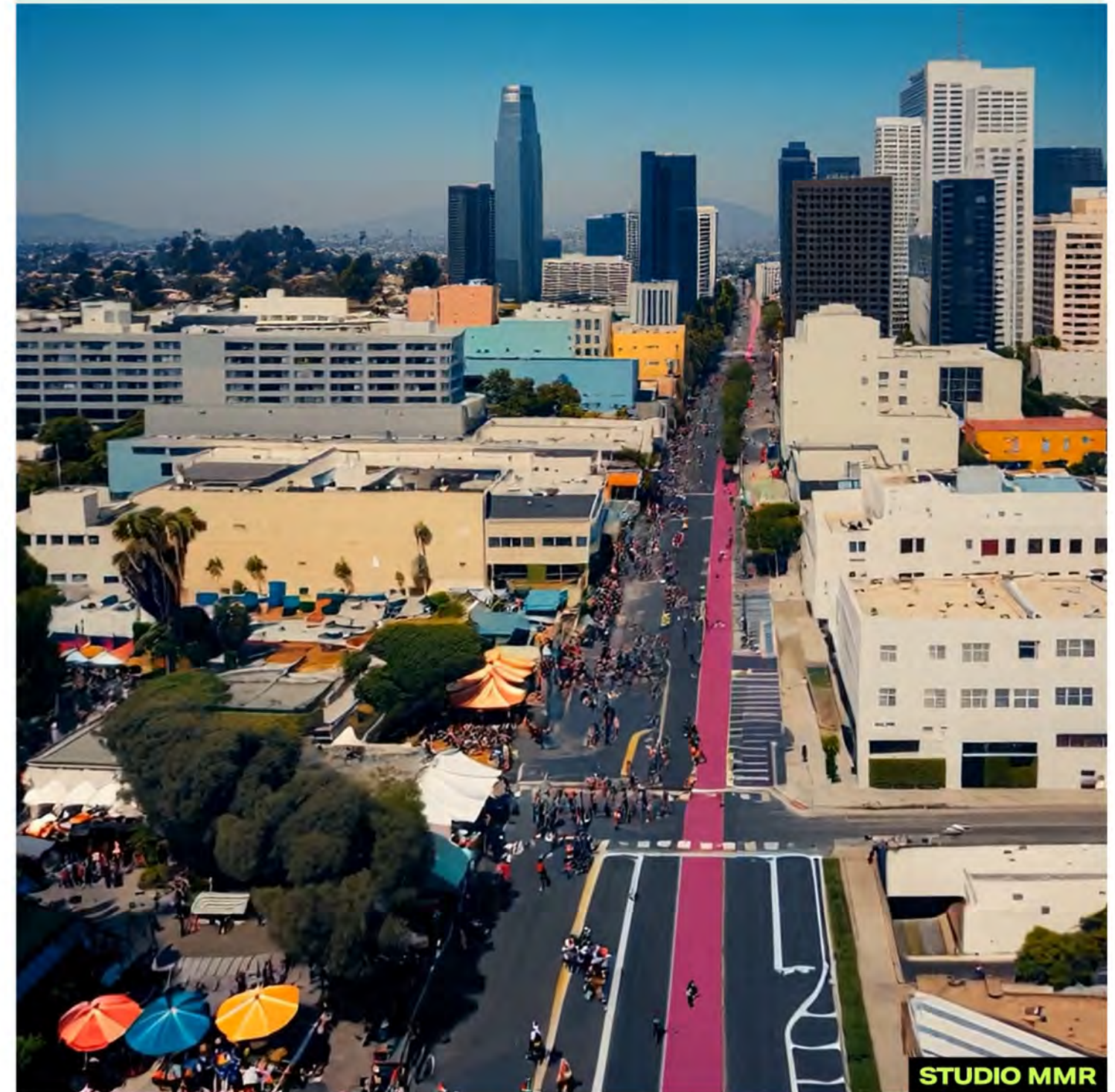
We are here to complete and activate the final 5% of the trail and unlock a network of community uplift.





# The Festival Trail is:

- + Permanent 28 Mile Mobility Corridor
  - + Walk, Bike and Roll through LA
  - + Connects 14 Olympic Destinations
  - + Seamlessly link 16 METRO and DOT Projects
  - + 15 Neighborhood Festival Hubs
  - + Mobility for All: 100% ADA Accessible & more
  - + Celebrate LA: Ocean to Mountains to LA River
  - + Zero Emissions Experience
  - + Prioritize 20,000 Units of Affordable Housing
  - + 10,000 Tree Urban Forest
- 
- = a legacy of equitable linkages





LA2028 Olympic Interface  
 The Festival Trail will connect the following Paralympic and Olympic Venues:

- LAX
- SoFi and Kia Forum
- Universal Studios
- Rose Bowl Stadium
- Downtown Sports Park:
  - a. LA Football Club Stadium
  - b. Dedeaux Field
  - c. Galen Center
  - d. Grand Park & LA City Hall
  - e. Olympic Family Hotels
  - f. LA Convention Center
  - g. Memorial Coliseum
  - h. Peacock Theater
  - i. Staples Center
  - j. USC Campus





# Concept: Housing Legacy

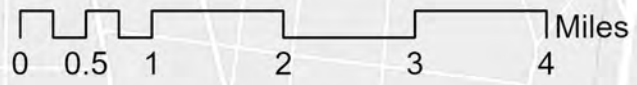
The Festival Trail can anchor **20,000+** units of affordable housing through the heart of Los Angeles.



- Vacant & Underdeveloped Lots
- City Owned Vacant & Underdeveloped Lots
- Olympic Trail
- - - 1/2 mi from Trail

**CONFIDENTIAL**

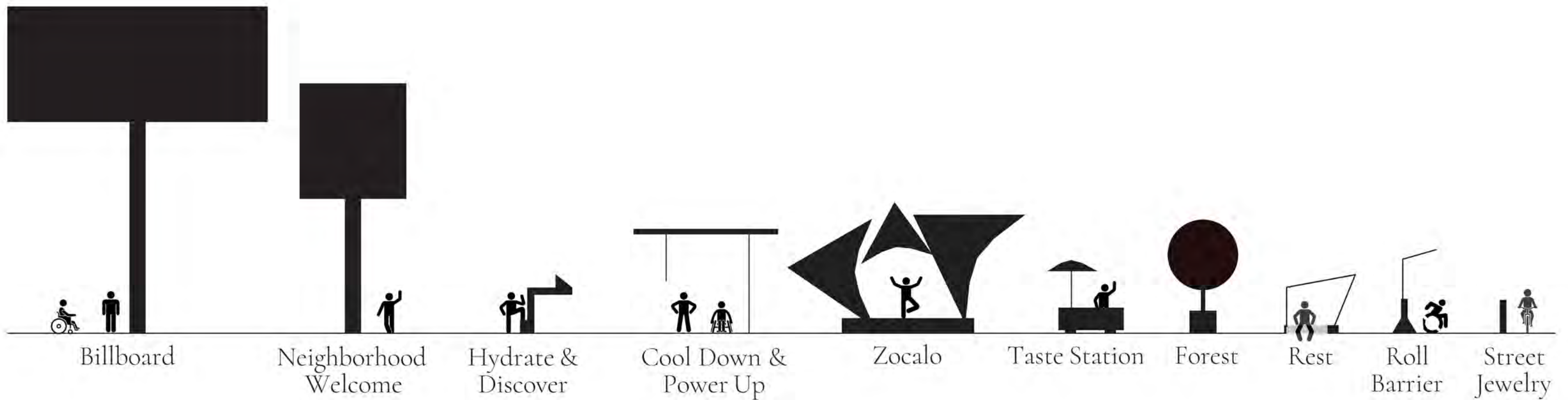
LAX/Metro Transit Center PARALYMPIC LEGACY PROGRAM







# 2028: The passage is the destination.





# The Festival Trail Resiliency Hub

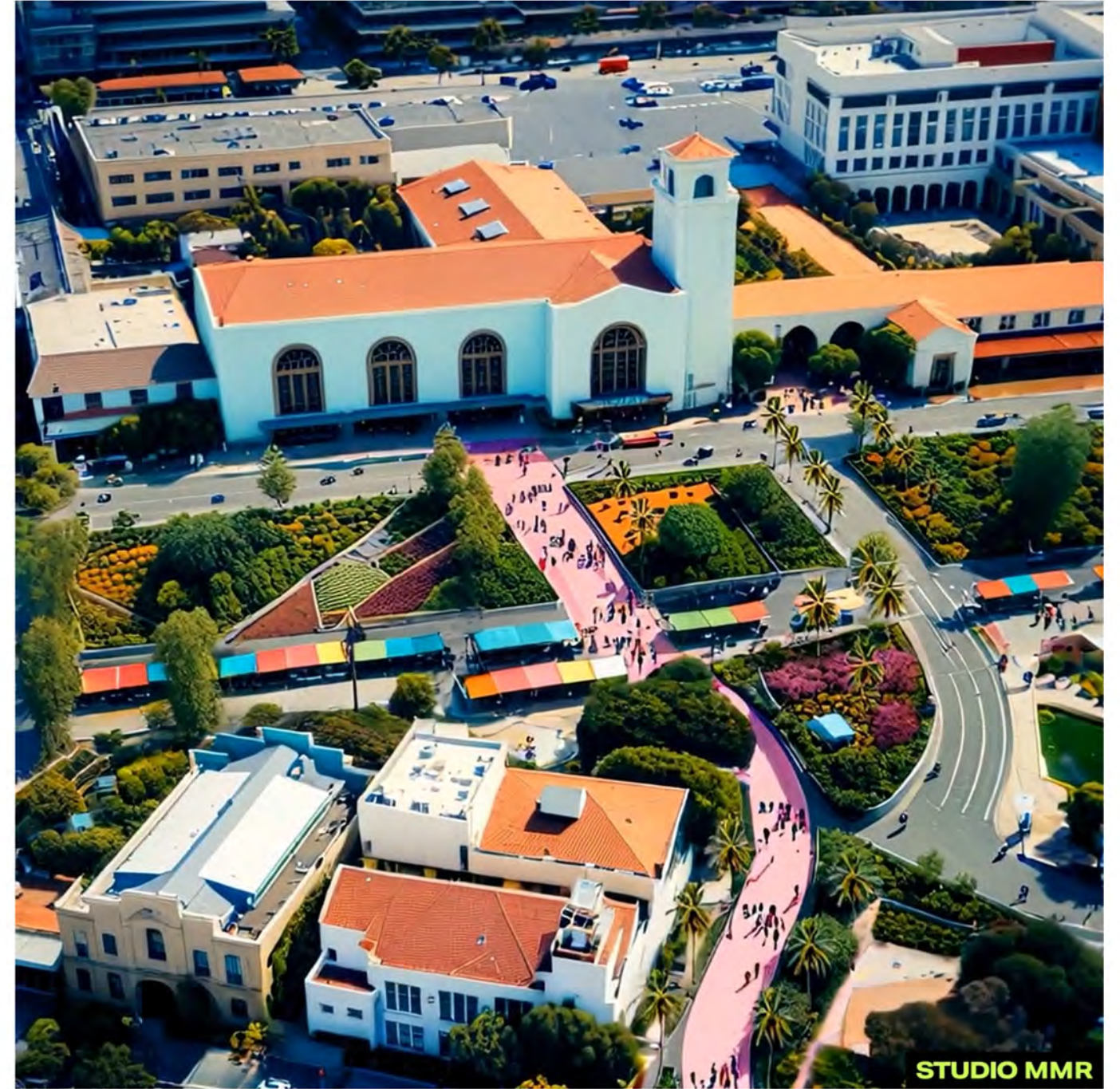




# Concept: Ways to Move



Grand Ave



El Pueblo



# a. Concept: Ways to Move



**River Bike Path**



**Rail to Rail and Destination  
Crenshaw Connector**



# Our Workstreams

	Legacy Goals	Festival Trail Scope	Funding	Budget \$280M
 <p><b>Mobility</b></p>	<p><b>Permanent 28 Mile Mobility Corridor</b></p>	<ul style="list-style-type: none"> <li>• Close gaps in 16 Metro and LADOT projects.</li> <li>• Execute on alternative delivery of bike infrastructure.</li> </ul>	<ul style="list-style-type: none"> <li>• Funded primarily through transit agencies.</li> <li>• Accessibility &amp; Enhancements funded by Festival Trail.</li> <li>• \$375M in LA River Path funding at Metro.</li> </ul>	<p><b>\$70M</b></p>
 <p><b>Housing</b></p>	<p><b>Policy for 20,000 units of affordable housing. Pilot projects now.</b></p>	<ul style="list-style-type: none"> <li>• Leverage existing policies to unlock affordable housing along the Festival Trail.</li> <li>• Build pilot projects by 2028.</li> </ul>	<ul style="list-style-type: none"> <li>• Seeking funding through philanthropy and private sector.</li> <li>• Partnerships with non-profit developers.</li> </ul>	<p><b>\$70M</b></p>
 <p><b>Resiliency</b></p>	<p><b>28 Resiliency Hubs</b> Culture + Climate + Place Keeping + Economic Development for All</p>	<ul style="list-style-type: none"> <li>• Build 28 resiliency hubs.</li> <li>• Community arts and culture program.</li> <li>• Fund long-term maintenance plan.</li> <li>• Plant 10,000 trees to create shade corridor.</li> <li>• Ensure 100% ADA experience.</li> </ul>	<ul style="list-style-type: none"> <li>• Seeking funding through philanthropy and private sector.</li> </ul>	<p><b>\$140M</b> (\$5M per hub)</p>



# Filling a critical gap for 2026,2028 and beyond.

The Olympic Games Opening Ceremony is July 14, 2028.

We have created a streamlined approach and amassed a diverse leadership coalition that represents every corner of the City and region.

We believe the City of Los Angeles is critical to bring the project to life over the next **1,254 days** with positive benefits for generations to come.





# The Festival Trail is a path to joy for LA. Join us.



ARTIFACT

MOVE LA  
A PROJECT OF NEIGHBORLY SOLUTIONS

SOMOS

FASTLinkDTLA

SAFER  
SOCIETY FOR ACCELERATING ECONOMIC RESILIENCE

LAccommons  
creating cultural connections



Los Angeles  
Neighborhood  
Initiative

California  
COMMUNITY  
Foundation

CONFIDENTIAL



# Technical Appendix





# a. Concept: Project Linkages

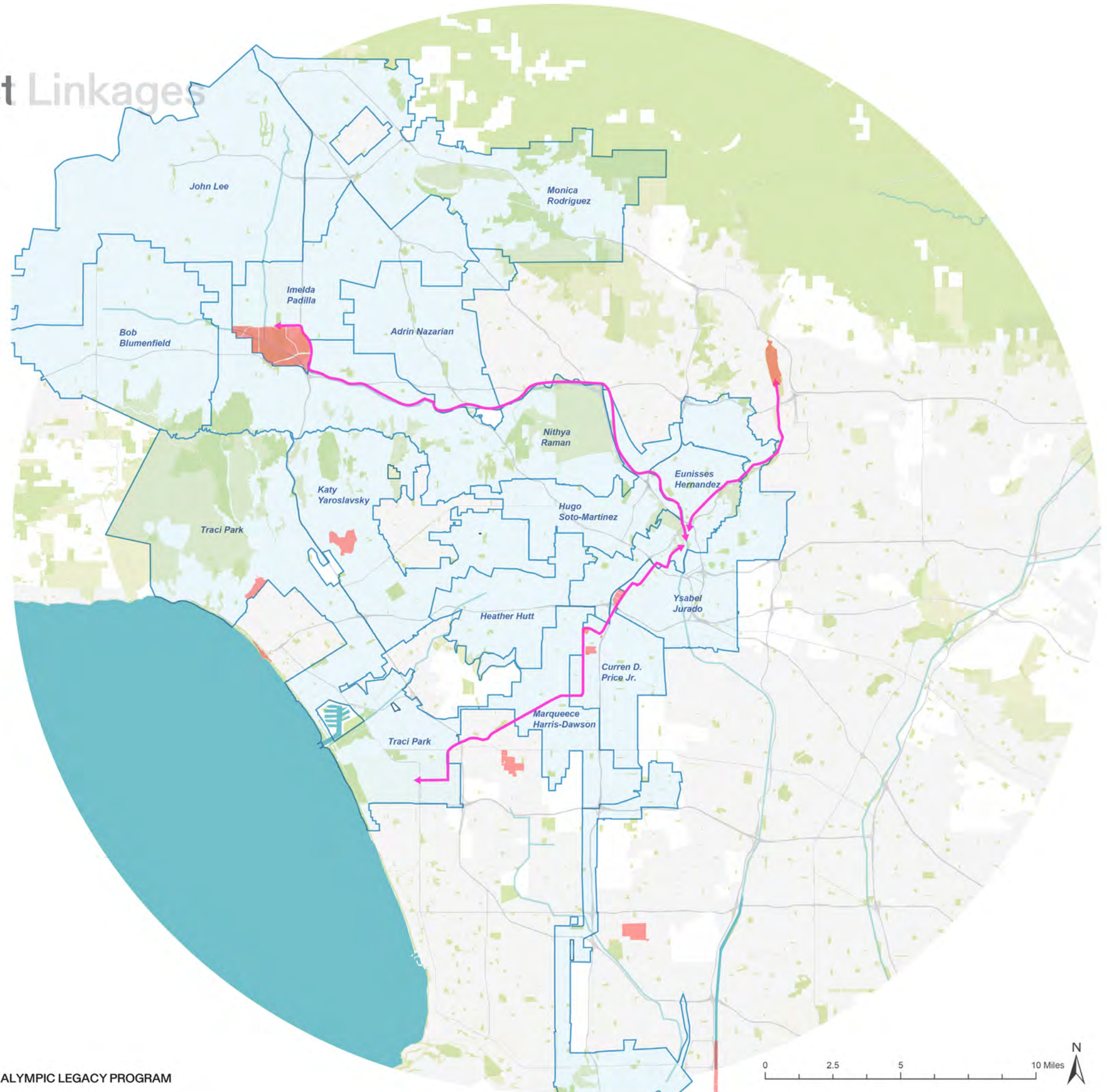
## CITY BOUNDARIES





# a. Concept: Project Linkages

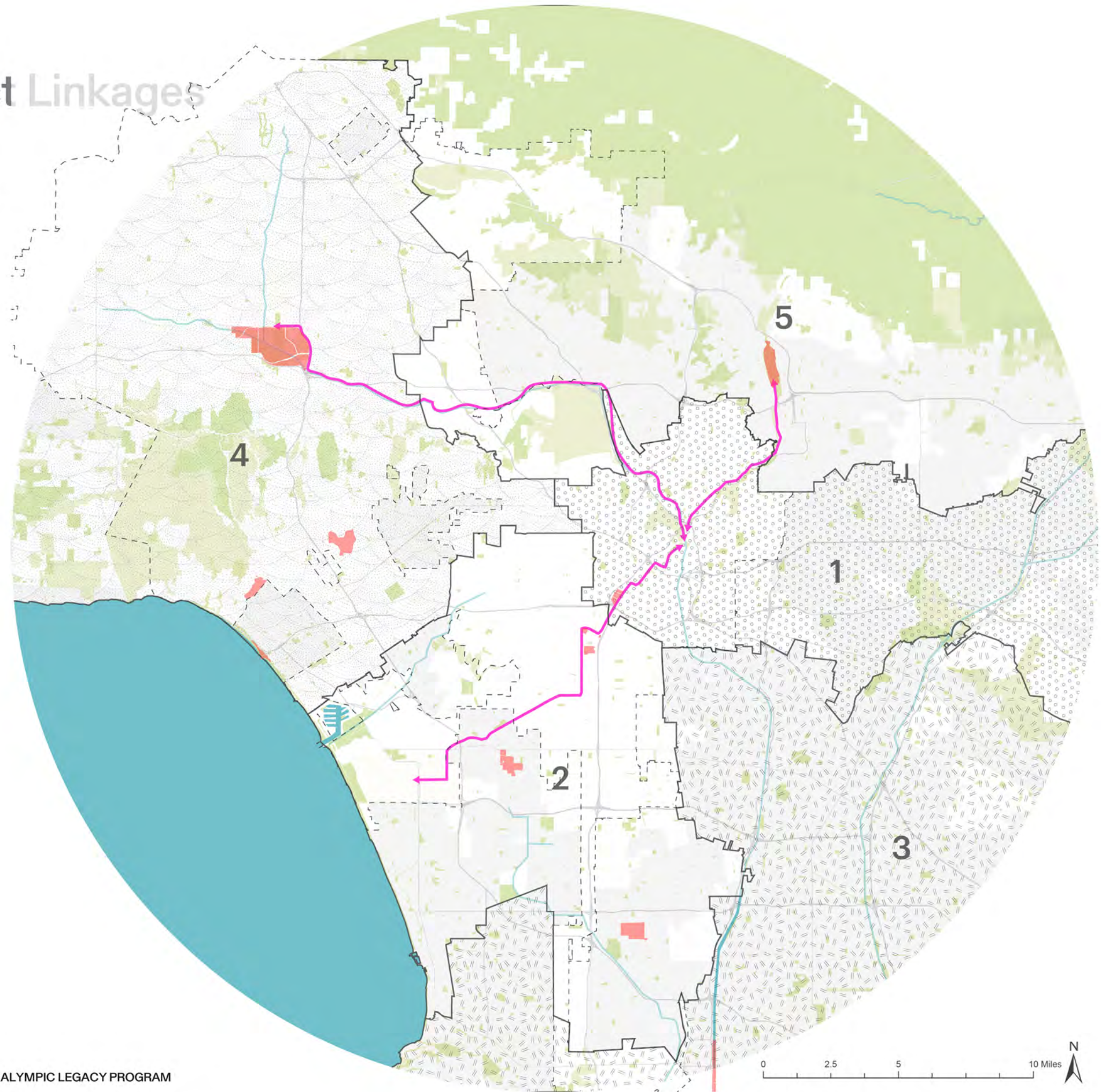
## LA CITY COUNCIL DISTRICTS





# a. Concept: Project Linkages

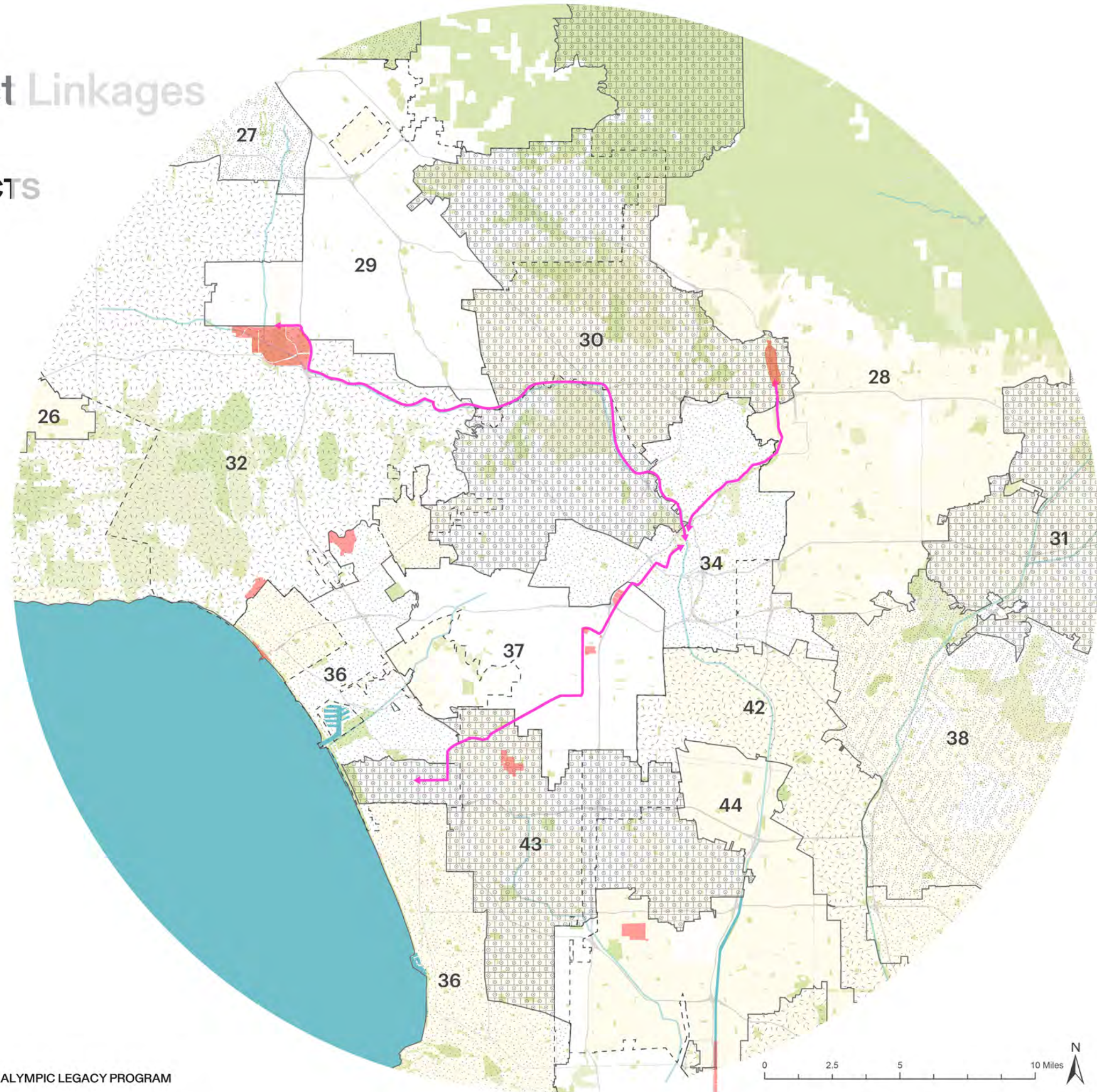
## LA SUPERVISORY DISTRICTS





# a. Concept: Project Linkages

## US CONGRESSIONAL DISTRICTS





# a. Concept: Project Linkages

## 1. LAX People Mover

**PROJECT AGENCY :** LAWA ( Los Angeles World Airports)  
**COST :** \$ 3.34 BILLION  
**TIME LINE :** JANUARY 2026  
**LENGTH :** 2.25 MILES

LAX's Automated People Mover (APM) is a new train that will provide time-certain access to terminals, parking, pickup and drop-off curbs, LAX's ConRAC and LA Metro's light rail system. The APM features an elevated guide-way with six stations – three inside the Central Terminal Area and three outside the of it, serving LAX Economy Parking, the Airport Connector station and the LAX Consolidated Rent-A-Car (ConRAC) facility.



## 2. K Line - Extension

**PROJECT AGENCY :** METRO  
**COST :** \$ 11-14.8 BILLION  
**TIME LINE :** 2026  
**LENGTH :** 5.9 MILES

While the stations on the K Line were built to accommodate three-car trains, the current C Line stations built south of the Interstate 105 were only built to accommodate two-car trains. To enable increased capacity of the line, Metro plans to lengthen the platforms at Aviation/LAX, Mariposa, Douglas, and Redondo Beach. The project is expected to be complete in time for the 2028 Summer Olympics.



## 3. Inglewood Transit

**PROJECT AGENCY :** City of Inglewood  
**COST :** \$ 2.2 BILLION  
**TIME LINE :** 2030  
**LENGTH :** 1.6 MILES

The ITC Project's fully-elevated, electrically-powered, automated transit system will address this critical first/last mile gap and provide a direct connection between the Greater Los Angeles region and the Los Angeles Sports and Entertainment District – an employment and visitor hotspot.





# a. Concept: Project Linkages

## 4. Rail to Rail

PROJECT AGENCY : METRO  
 COST : \$ 143 MILLION  
 TIME LINE : 2025  
 LENGTH : 5.5 MILES

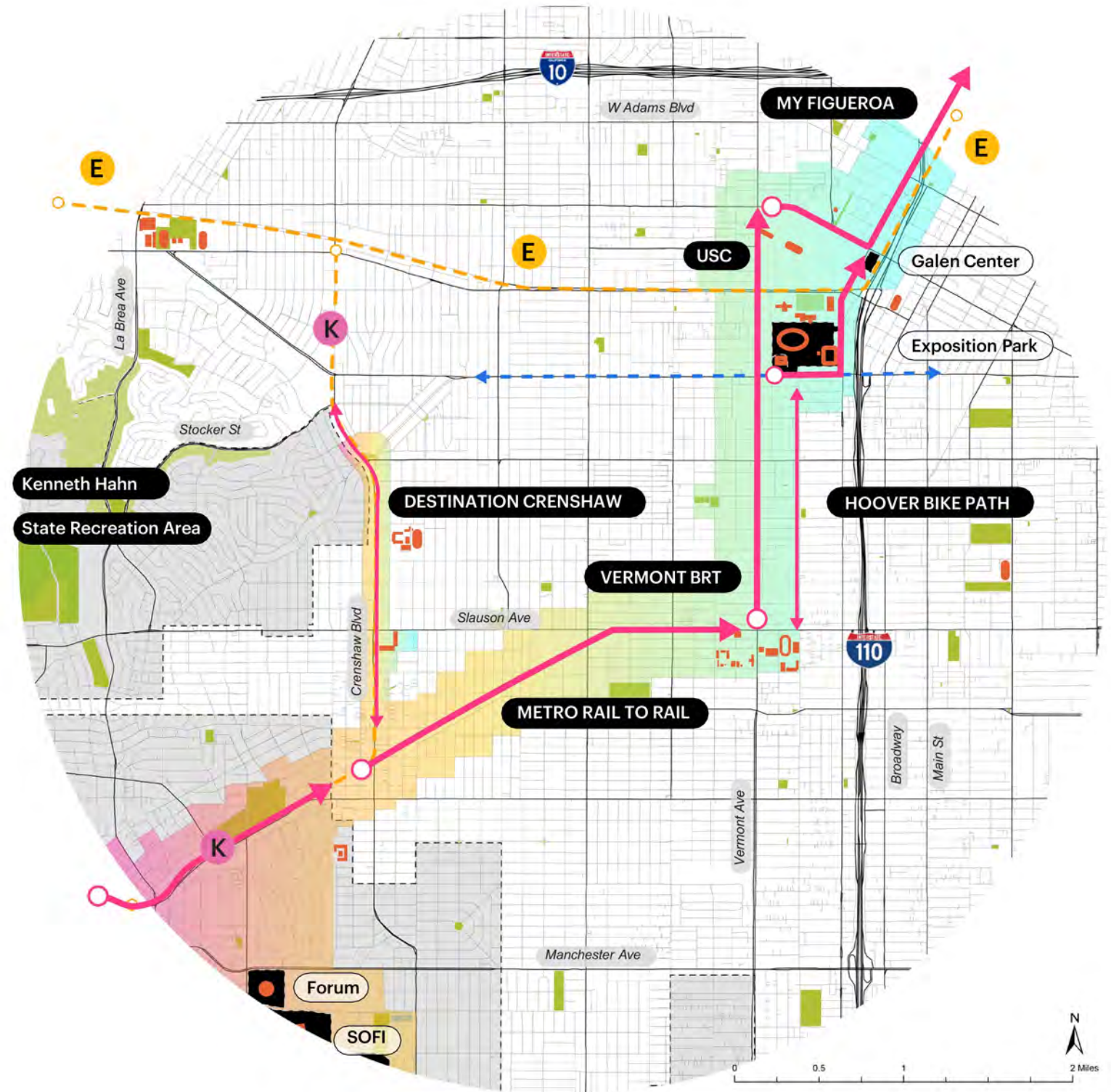
Metro has a plan to make it easier to get around and it includes complete streets that are safer for everyone. The Rail to Rail Project will create biking and walking paths that connect to the Metro K Line Fairview Heights Station and Metro A Line Slauson Station. The project will create more options for active transportation, connections to transit and access to opportunity.



## 5. Vermont Transit Corridor

PROJECT AGENCY : METRO  
 COST : \$ 425 MILLION  
 TIME LINE : 2028-30  
 LENGTH : 12.4 MILES

The Vermont Transit Corridor is a proposed 12.5-mile bus rapid transit line in the Metro Busway network in Los Angeles, California with plans to convert it to rapid transit in the future. It is planned to operate on a north-to-south route on Vermont Avenue between the B Line's Vermont/Sunset station and the C Line's Vermont/Athens station on the Los Angeles Metro Rail system.





# a. Concept: Project Linkages

## 6. My Figueroa

PROJECT AGENCY : LADOT  
COST : \$ 20 MILLION  
TIME LINE : 2018  
LENGTH : 4.5 MILES

The Figueroa Corridor Streetscape project (MyFigueroa) transformed the Figueroa Corridor into a complete, multimodal street that better serves the needs of pedestrians, bicyclists, transit riders, and drivers alike.

In 2021, LADOT is getting back to work on the Figueroa corridor to continue the multimodal connection north from Wilshire Boulevard to 2nd Street.





# Concept: Project Linkages

## 7. DTLA SOUTH PARK

PROJECT AGENCY : LADOT  
 COST : \$ - MILLION  
 TIME LINE : -  
 LENGTH : 1.5 MILES

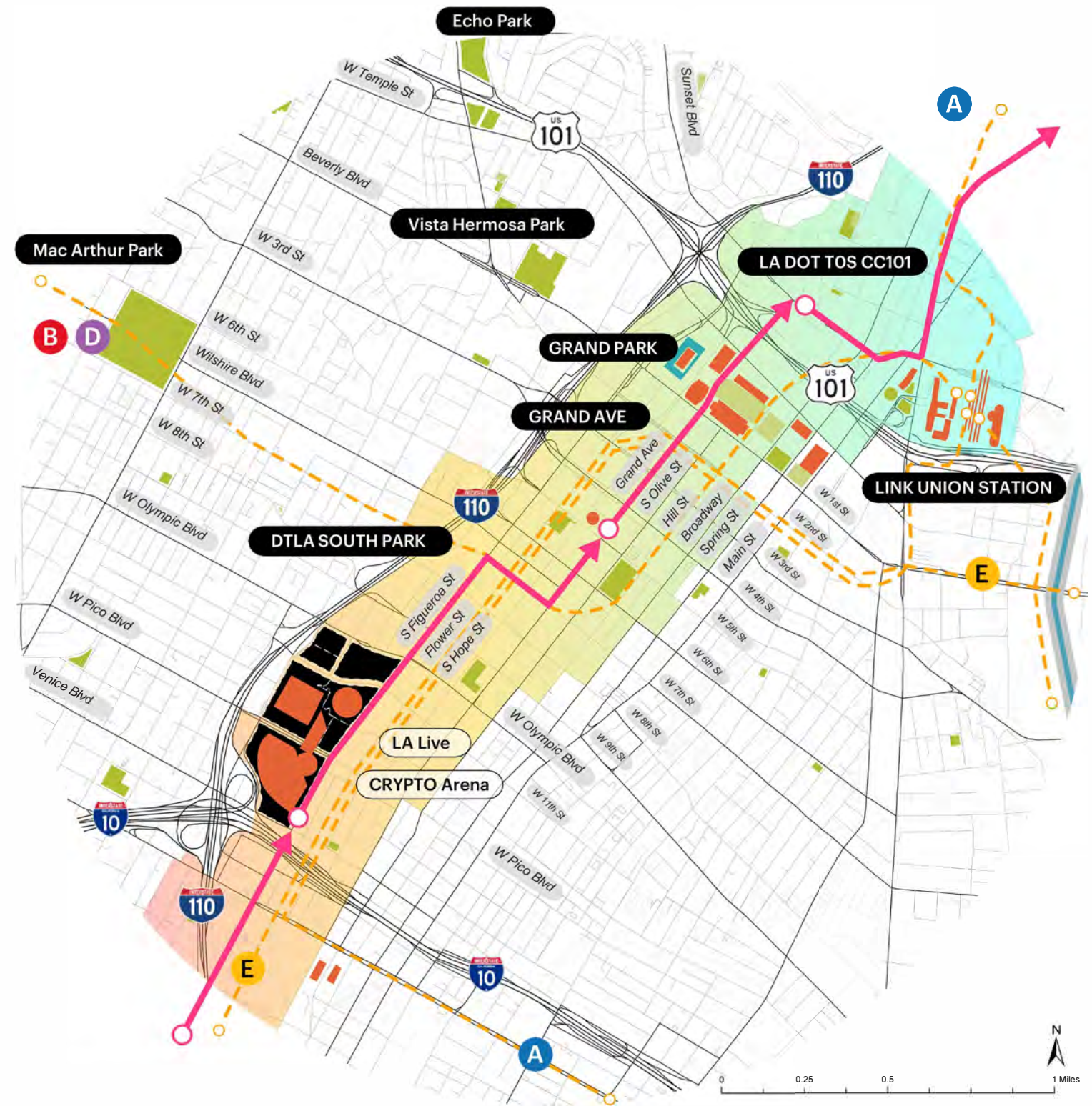
The Figueroa Corridor is proposed as 1 of 12 major streets to be improved safety and comfort for people walking, biking, taking transit, and driving along this corridor.



## 8. GRAND AVE

PROJECT AGENCY : Festival Trail Coalition  
 COST : \$ - MILLION  
 TIME LINE : -  
 LENGTH : 0.9 MILES

The Festival Trail Coalition proposes the semi-permanent closing of Grand Ave to cars from 1st to 5th street, creating a legacy regional event street for the City.







# Concept: Project Linkages

## 9. Link Union Station

PROJECT AGENCY : METRO  
 COST : \$ 1.9 BILLION  
 TIME LINE : 2033  
 LENGTH : 0 MILES

Improvements at Union Station to address existing capacity constraints and improve connections between rail and bus services and future high-speed rail service.

The Link US Project proposes new run-through tracks on an elevated rail yard to improve operational flexibility, expand Los Angeles Union Station (LAUS) capacity, and accommodate future high-speed rail service. It also proposes an expanded passageway.



## 10. LA DOT - TOS CC-101

PROJECT AGENCY : LADOT  
 COST : \$ -  
 TIME LINE : 2028  
 LENGTH : 1.6 MILES

LADOT is reorganizing Main Street and Spring Street in Downtown Los Angeles (DTLA) to improve safety and comfort for people walking, biking, taking transit, and driving along this corridor.





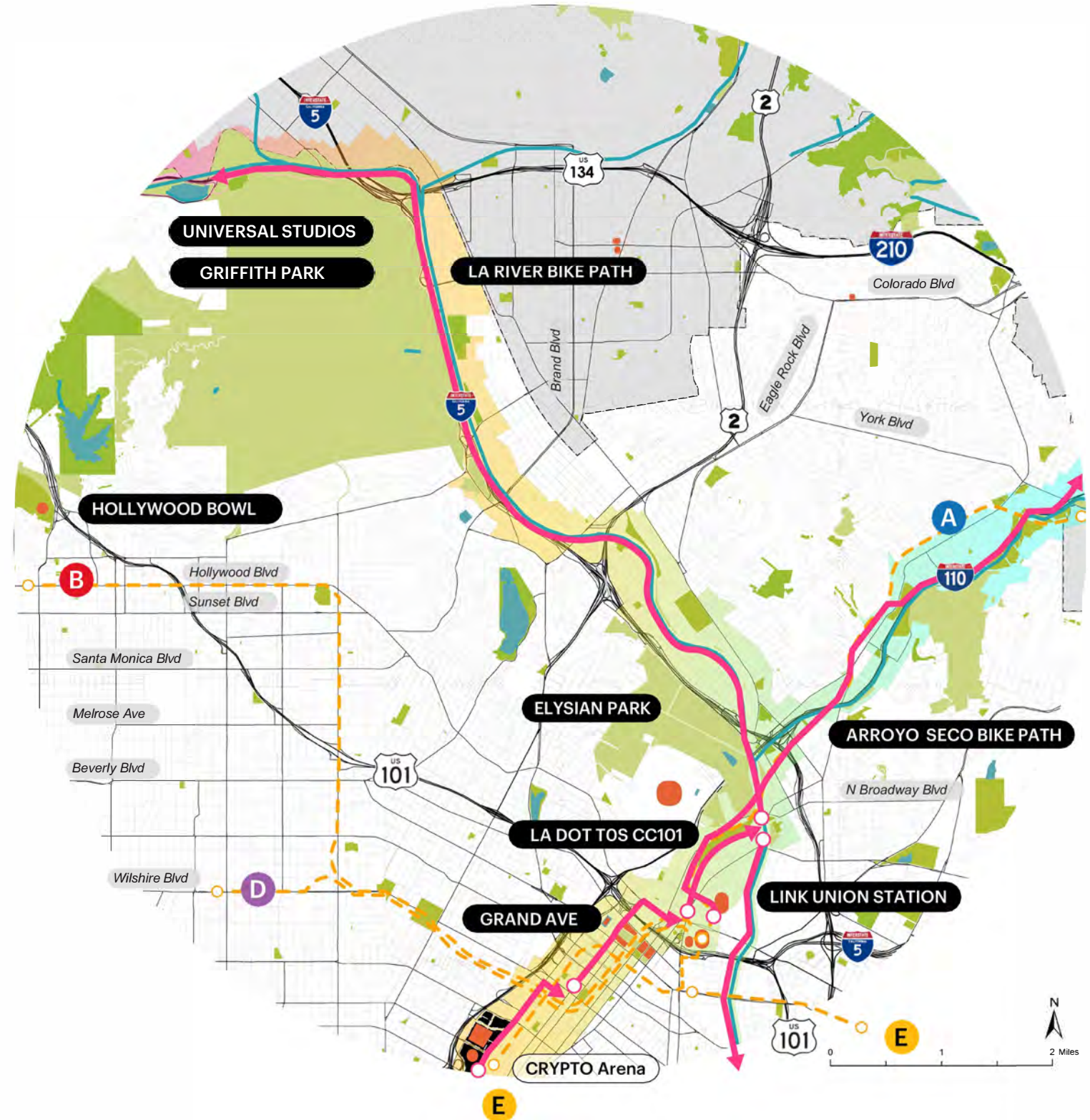
# Concept: Project Linkages

## 11. LA River Bike Path

**PROJECT AGENCY :** METRO/ Festival Trail Coalition  
**COST :** \$ 200 MILLION  
**TIME LINE :** 2025  
**LENGTH :** 15 MILES

The LA River Path Project is a new bicycle and pedestrian path along an approximately eight-mile stretch of the Los Angeles River from Elysian Valley through Downtown Los Angeles to the City of Maywood.

Metro is making it easier to get around with an eight-mile shared-use bicycle and pedestrian path along the LA River between Elysian Valley and the City of Maywood, through downtown Los Angeles and the City of Vernon. This project will close the gap in the LA River Path, creating a safe, efficient active transportation travel option connecting the San Fernando Valley and Long Beach.





# Concept: Project Linkages

## 12. Arroyo Seco Bike Path

PROJECT AGENCY : METRO  
COST : \$ 2.8 MILLION  
TIME LINE : 2025  
LENGTH : 2 MILES

The bicycle path connects: Montecito Heights at Ernest E. Debs Regional Park and the Montecito Heights Recreation Center; Hermon at Hermon Park and Ernest E. Debs Regional Park; and Highland Park at Sycamore Grove Park -- to the city of South Pasadena at the Arroyo Seco Stables. [1] The pathway travels under the cover of tall California sycamore and California oak trees.

